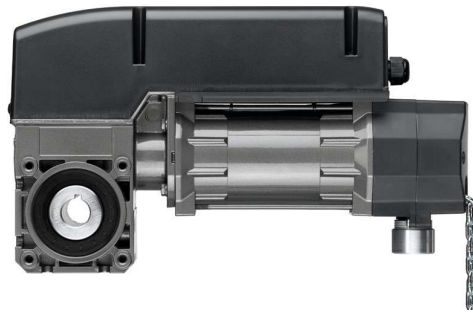


Spring-Balanced Sectional Doors



STA with external control



STAC with integrated control

STA/STAC

Are you looking for the perfect drive solution for spring-balanced sectional doors? Then our STA drives with integrated or external controls are the right choice for you! STA drives have a gear unit developed for this purpose with a special motor that provides a lot of power in a very small space.

STA – the convenient complete solution

With its external control, the STA is a convenient complete solution. The control ensures effortless programming from the operator level, which is possible via a plain text display, and offers numerous additional functions for all-round use.

STAC – the inexpensive alternative

With its integrated control unit and a pluggable triple button for controlling the gate, the STAC offers an inexpensive, compact alternative. It is ideal for convenient daily use.

Drive features and benefits

- Housing made of die-cast aluminum
- Standard hollow shaft 25.4 mm; special 31.75mm, 35mm, and hex 32mm solutions are also available
- Rolled worm shaft
- Higher duty cycle available
- Static holding torque of 600 Nm of the STA gearbox – nothing can fall if a load-bearing element breaks/is defective
- Various emergency controls available – reliable operation in the event of a power failure

- End-position switch-off with electronic end-position system or mechanical limit switches
- Accessories from other providers can also easily be connected
- Four different mounting types for STA: direct attachment, axle chain drive, flange, or rail-guided assembly
- All voltages/frequencies up to 480 V/3~ available on request
- IP65

Product Key Information

How to read the product name

Product name

STA	3-PH drive
STAC	3-PH drive (integr. controller)
STAW	1-PH drive
STAWC	1-PH drive (intgd controller)
SDO	1/3-PH drive

MDF	3-PH drive
KD	3-PH drive
MTZ-S	3-PH drive
MTZ-FU	1/3-PH drive

Torque index

The torque index multiplied by the factor 10 results in the output torque (Nm), for example: 10 x 10 = 100 Nm

Type of emergency operation

KU	Emergency hand crank
KE	Emergency hand chain
E	Quick release
E/KE	Emergency hand chain with maintenance release
E-FR	Release with spring return

Motor voltage

STA 1-10-24 KE 400V/3PH HD

Gear size index

Nominal speed (at 50 Hz)

The speed (min-1) at which the gearbox hollow shaft rotates

Additional information

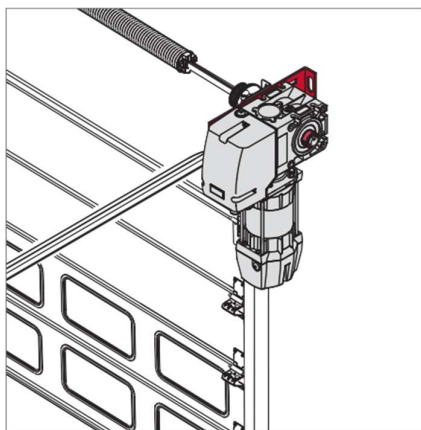
HD	Higher duty cycle available
25,4	Standard hollow shaft
VZ	Splined hollow shaft
IP65	Protection class
AWG	Absolute encoder
MEC	Mechanical limit switch
FU/I	Frequency converter onboard

Our flexible
long-running
favorite for
sectional doors

STA Drive Mounting Types

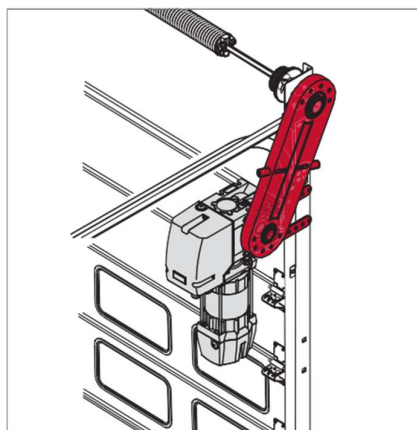
Direct assembly

The drive is attached directly to the spring shaft of the sectional door. A torque support is used to attach the drive to the wall or the shutter frame.



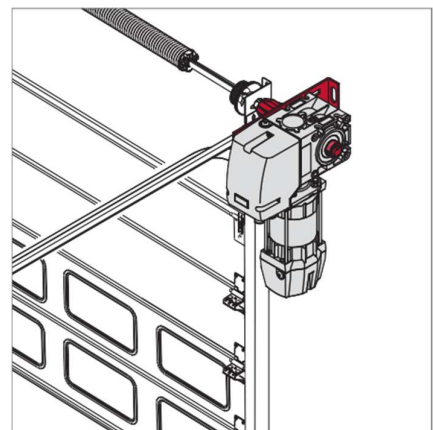
Axle chain drive

The drive is attached to the spring shaft of the sectional door via an axle chain drive. With a spring shaft flange width of just 62 mm, this variant is suitable if there is not enough space for push-on mounting.



Mounting with flange

The drive is attached to the spring shaft with a plug-in shaft adapter. This is an ideal solution, especially for the 40 mm spring shaft. A torque support is used to attach the drive to the wall or the door frame.



Technical Data

A selection from our product portfolio

	Output torque	Nominal speed	Operating voltage	Motor performance	Hollow shaft	Emergency operation	Door weight	Door size
	Nm at 50 Hz	min-1 at 50 Hz	V	kW	mm		max. kg	m ²
STA/STAC 1-10-24	100	24	400/3~	0.37	25.4	E KE KU	390	30
STA/STAC 1-14-19	140	19	400/3~	0.65	25.4	E KE KU	650	50
STA/STAC 1-12-19 HD	120	19	400/3~	0.55	25.4	E KE KU	650	50
STA 1-11-24 FU/I	110	24	230/1~	0.55	25.4	E KE KU	585	45
STA 1-11-24 FU/I HD	110	24	230/1~	0.55	25.4	E KE KU	585	45
STAW/STAWC 1-6-24	60	24	230/1~	0.37	25.4	E KE KU	260	20
STAW/STAWC 1-7-19	70	19	230/1~	0.37	25.4	E KE KU	260	20

